

Luma's Observation

Most game-like learning approaches are set up to be competitive with learners competing against other learners, but adults also show motivation when helping or encouraging others to achieve their goals.

A competitive approach.

Where do I stack up?

LEADERBOARD

-  1. Boo
-  2. Squiggles
-  3. Nugget
-  4. Widget
-  5. Brush
-  6. Harry
-  7. Bonk
-  8. Orbee

luma

Lumafy Tip 16

Use a combination of collaborative and competitive approaches.

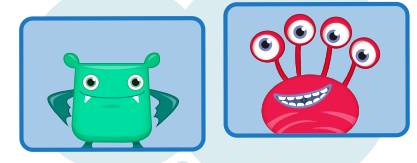
Where do we stack up?

A common way of combining collaborative and competitive approaches is creating team challenges where multiple people and teams win! Players collaborate within their team and support their team's success and compete with other teams.

The All-Stars



The Cool Kats



The Mind Crusaders



The Safety Squad



luma